

Chase Falls Fountain Instructions

Water Wonders®

Rev B



Welcome to the Water Wonders family. A few simple steps will ensure that your *Chase Falls* remains a soothing, enjoyable fountain that brings the sights and sounds of nature to your indoor environment. An important consideration when choosing the proper location for your fountain is the close proximity of a power source. We recommend mounting your fountain directly over an electrical outlet, allowing for the use of the copper trim strip provided to conceal the water pump and light source power cords. The *Chase Falls* fountain does not use wall studs for mounting.

Helpful Hints

Before getting started, keep in mind these important points which will help ensure a successful installation and smooth operation of your new fountain.

- Always wet slate before turning on pump.
- Always maintain a water level of approximately $\frac{1}{2}$ " from the top of the water pan.
- Be careful where the fountain is set up. Try not to place the fountain in a spot where it could potentially be bumped into or cause damage.
- Never use chemicals or copper cleaner on the fountain, as this will ruin the finish.
- It is very important to rinse your slate clean of any slate dust or chips that may have accumulated during shipping prior to assembling your fountain.
- **Remember to locate the copper cord cover before discarding the box.**

Tools Required

Phillips® Head Screwdriver
Hammer
Tape Measure

Pencil
Level
Power Drill (optional)

****Very Important****

Keep These Instructions with the Fountain

In order to maintain the beauty and function of your fountain, it is very important that these simple steps are taken to ensure satisfaction for years to come.

Maintenance and Operation Techniques

- The use of distilled water is highly recommended. This will prolong the life of the pump, and greatly reduce the occurrence of mineral build-up.
- Maintain a water level of 1/2" from the top of the pan by periodically adding water. Do not allow the pumps to run dry.
- Wipe away any excess water that may accumulate on the copper surfaces. Water on the outside of the copper will accelerate the verdigris (copper turning green) process.
- Use Pledge Furniture Polish with wax to help maintain the original finish of the copper. Spray the Pledge on a soft cloth and wipe the copper. This should be done 3-4 times a week.
- If you have a clear coated fountain...To clean the clear coated components of your fountain, use mild soap and a damp rag to remove stains and dust. Then take a damp rag that has no soap on it to clean off the soap residue.
 - If the fountain is splashing, reposition the rocks in the pan to catch the water. The pump volume can also be turned down
- Every four months, it is a good idea to clean the pump. The pump can be taken apart by sliding the plastic face off of the pump body, and the magnetic impeller can be removed and cleaned with a calcium/lime/rust remover.

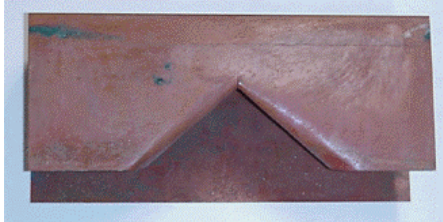
1 REMOVE AND ASSESS COMPONENTS

Chase Falls Fountain Instructions

Water Wonders®

Rev B

Remove all packaging materials and fountain components from the box. Before you begin mounting your fountain, make sure you have the following materials.

<p>Slate Backboard</p>		<p>Copper Reservoir Pan</p>	
<p>Copper Rock Support Tray</p>		<p>Copper Light Fixture Kit</p>	
<p>Water Pump</p>		<p>Copper Cord Cover w/ clips</p>	
<p>Rocks</p>		<p>Also included are: Spiral EzAncors® (x3) Plastic Anchors (x4) #8x1" Stainless Screws (x2) #8x1" Zinc-Plated Screws (x5)</p>	

Mounting Instructions:

Chase Falls Fountain Instructions

Water Wonders®

Rev B

- 1. Reservoir Pan:** If the fountain is to be mounted over an electrical outlet and the copper cord cover used, measure 24" from the top of the electrical outlet face plate and mark the spot on the wall with a pencil. If the fountain will not be located over an electrical outlet, mark a spot on the wall representing the bottom of the fountain. Hold the copper reservoir pan (the copper rock support tray should be in the pan) against the wall so that the bottom is on the mark. Locate the two mounting holes. Using the sharp end of the pencil, make an indentation in the wall through one hole. Set the reservoir pan aside and place a spiral anchor in the wall at the indentation points using a Phillips-head screwdriver. *Helpful hint: To make mounting easier, remove burrs in the mounting holes by first threading and then removing screws before attaching reservoir pan to the wall.* Use a #8 x 1" stainless steel (dull silver finish) screw to mount one side of the reservoir pan to the wall anchor. With a level or measuring tape, level the reservoir pan against the wall and repeat the mounting procedure for the other side. **Before screwing both sides of the pan into the wall, set the pump into the pan and extend the power cord over the back of the pan so it is between the wall and the back of the pan.**
- 2. Slate Backboard:** To determine the slate backboard hang point, center the backboard in the reservoir pan by first resting its bottom on the rock support tray. Use a pencil to mark the wall on both sides of the backboard. Remove the backboard from the reservoir pan and, using a tape measure, mark the wall at the center point between the backboard side wall marks. Remove the rock support tray from the reservoir pan. Measure 33" up from the bottom of the pan and mark the wall along the same vertical line as the center point mark. Place a spiral anchor in the wall at the 33" center mark and insert the #8 x 1" zinc plated screw (shiny silver finish) leaving approximately 1/2" exposed. Mount the backboard by placing its mounting bracket onto the exposed bolt.
- 3. Light Fixture Kit:** Mark the wall 2" down from the top of the backboard on both sides. Slide the light fixture housing over the top of the backboard until the bottom reaches the wall marks. Locate the two mounting holes at the top of the fixture housing and, using the sharp end of the pencil, make an indentation in the wall through one hole. Place the fixture housing aside and make a hole in the wall at the indentation point using a power drill with a 3/16" bit (or a Phillips-head screwdriver). Insert a blue plastic anchor in the hole and carefully hammer it until flush against the wall. Using a #8 x 1" zinc-plated screw, mount one side of the fixture housing to the wall anchor. Place the electrical cord behind the fixture housing and, using a level or a measuring tape, level the fixture housing. Repeat mounting procedure for the other side. The light fixture electrical cord will run over the top of the slate backboard and behind both the mounted backboard and the reservoir pan. Remove the slate backboard from the wall, raising it through the top of the light fixture housing and out of the reservoir pan. Place the water pump into the reservoir pan. Remove one mounting screw from the anchor, place the light fixture and water pump electrical cords behind the pan and remount the pan to the wall. *Helpful hint: Tape some slack in the light socket electrical cord onto the wall a couple of inches above the fixture housing to make remounting of the slate backboard easier.* Remount the slate backboard to the wall and insert 25-watt bulb into the light socket.

Chase Falls Fountain Instructions

Water Wonders®

Rev B

4. **Install Cord Cover:** If you are using the copper cord cover, position both electrical cords as if you were going to plug them in but **DO NOT PLUG THE ELECTRICAL CORDS INTO THE RECEPTACLE UNTIL THE CORD COVER HAS BEEN MOUNTED. DRILLING THROUGH OR OTHERWISE COMING IN DIRECT CONTACT WITH LIVE ELECTRICAL CORDS MAY CAUSE ELECTRIC SHOCK OR ELECTROCUTION.** The cord cover is the 24" long strip of copper that is press-fit over the provided copper clips (x2). From the bottom edge of the water pan, measure down and mark 2" and 22". Drill 1/8" holes at the marks. Insert plastic anchors in those holes. Screw in the provided cord cover clips into the plastic anchors. Once the clips are secured, run the pump and light cord over the clips and apply the cord cover.



Set-up and Boot-up:

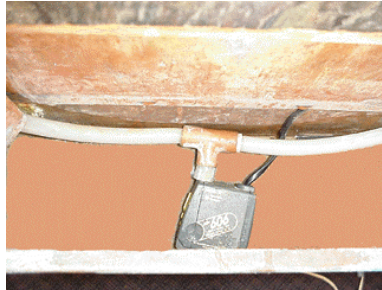
1. Insert the water pump output nozzle into the slate backboard's clear intake tube. Return the rock support tray to the reservoir pan by holding the tray with the cord-opening panel to the back. Gently squeeze the plate together so that the top panel

Chase Falls Fountain Instructions

Water Wonders®

Rev B

bows slightly outward and place into the reservoir pan. Place the rocks on top of the copper tray to catch the falling water. Fill the reservoir pan with water (distilled or purified is recommended) to within ” from the top of the pan. Using a spray bottle, mist the slate tile to help the water “wick” to the slate and ensure full coverage. Illuminate the light bulb by turning the switch located on the light socket.



- 2.** You are now ready to plug in your fountain and enjoy the soft, soothing, relaxing sounds of nature in your home or office. Control splashing and your fountain’s tone by repositioning rocks under and around the water stream. To alleviate water dripping from the top of the fountain’s copper frame, locate the neoprene water hose beneath the top copper splashguard (from which water flows onto the slate tile). With the fountain plugged in, adjust the orientation of the hose so that the water stream from the dispersment holes flow unobstructed into the pad of scotchbrite that is positioned beneath the disperser. Also, it is helpful to press the copper frame closer to the slate at the top of the frame.

Maintenance:

- Check the water in your fountain periodically – about as often as you would water your houseplants - for a water level of **1/2” from the top of the pan.** Water will evaporate from the fountain and adversely affect the performance of the water pump, which **MUST** be completely submerged for proper operation and longevity. **NEVER ALLOW YOUR WATER PUMP TO OPERATE DRY!**
- Mini-Jet® pumps are designed to provide exceptional pumping capacity with minimal maintenance. **Please read the manufacturer’s instruction sheet for important safety, operation, maintenance and warranty information. Cleaning and repair information can be found in the instructions section for 404/606 on the Water Wonders website.**
- We have carefully hand-applied a patina finish to your fountain’s copper components. If you like this finish as much as we do, it can be protected from natural oxidation by applying Pledge or another household wax with a soft cloth. **DO NOT USE COPPER CLEANER**, as this will remove the patina, leaving the original bright copper finish. However, should you not wish to preserve our finish, simply do nothing and allow nature to create its own permanent patina.

Chase Falls Fountain Instructions

Water Wonders®

Rev B

If you have a clear coated fountain...

- To clean the clear coated components of your fountain, use mild soap and a damp rag to remove stains and dust. Then take a damp rag that has no soap on it to clean off the soap residue.

Trouble-shooting:

- *Pump is too noisy:* Be sure the pump's output nozzle is securely inserted into the fountain's clear intake tube as forced water escaping the connection may cause unwanted air bubble noise. Make sure the pump is completely submerged.
- *Uneven water flow:* Make sure the top width of the copper frame does not make contact with the slate tile. Firmly press in on the outside top copper beveled frame until there is approximately a 1/16" space between the slate and the copper frame. Make sure the water stream from the neoprene hose located on top of the fountain is directed into the scotchbrite pad.
- *Water does not flow:* Make sure pump output nozzle is inserted into rubber intake tube, pump is completely submerged and the electrical cord is plugged into a working receptacle.

Continued on next page.....

Due to the unique design of the fountain, Chase Falls fountain utilizes a strip of Scotchbrite pad to control the water flow. It absorbs water and distributes evenly across on to the slate. Without the pad, the flow of the water is fast and heavy. To achieve the correct water flow, make sure that the Scotchbrite pad in the right position as shown below. The pad should be located in the trough of the dispersement directly underneath the plastic tubing. It should block the gap between the slate and the copper frame at the top of the fountain.

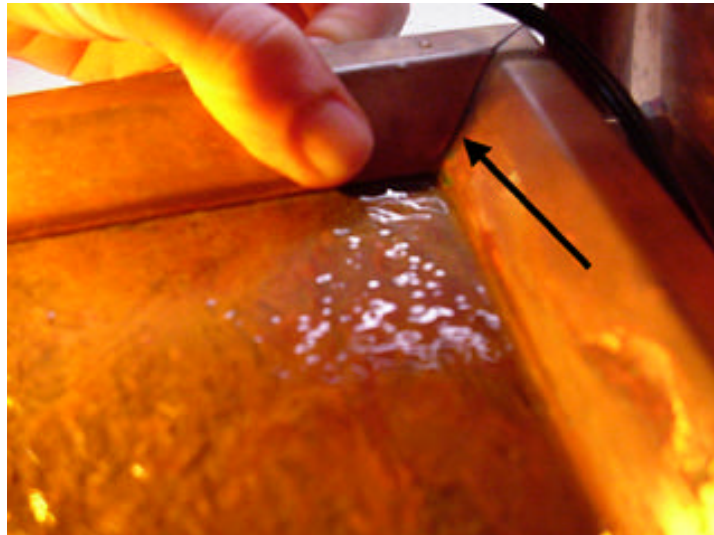
Chase Falls Fountain Instructions

Water Wonders®

Rev B



If water is running down the side of the copper frame, it is due to either the Scotchbrite pad not being in place, or the frame needs to be pressed tighter in the corners. A combination of adjusting the disperser, scotchbrite, and the copper frame will eliminate any water running down the side of the frame.



Note: Although Water Wonders Fountains are designed not to splash, sweating from condensation and splashing droplets can occur if set up incorrectly. As a precaution against water stains, please protect fine surfaces under and near fountain.

If you have any questions regarding the set-up or maintenance of your fountain please call your dealer.