

# Large Wall Wave Fountain

©Water Wonders, Inc.



Welcome to the Water Wonders® family. A few simple steps will ensure that your *Large Wall Wave* remains a soothing, enjoyable fountain that brings the sights and sounds of nature to you. Two important considerations when choosing the proper location for your fountain are power source and a sturdy, mounting surface. Before you set your fountain up, decide where you are going to plug in the power cord. The fountain should be plugged into a standard GFI outlet. It can be mounted over a switched outlet if you wish to hide the cord, however a recessed box is not necessary. Because of its light weight, it is not necessary to mount this fountain directly into wall studs.

## Helpful Hints

**Before getting started, keep in mind these important points which will help ensure a successful installation and smooth operation of your new fountain.**

- Always wet slate before turning on pump.
- Do not fill pan closer than 1/2" from the top while it is running as water drains back into pan when the power is off and may cause overflowing.
- Be careful where the fountain is set up. Try not to place the fountain in a spot where it could potentially be bumped into or cause damage. Avoid delicate surfaces that could be damaged by splashing.
- Never use chemicals or copper cleaner on the fountain, as this will ruin the finish.
- Save these instructions for future reference.
- See trouble shooting guide for pump maintenance information

# Large Wall Wave Fountain

©Water Wonders, Inc.

## **\*\*Very Important\*\***

### **Keep These Instructions with the Fountain**

In order to maintain the beauty and function of your fountain, it is very important that these simple steps are taken to ensure satisfaction for years to come.

## **Maintenance and Operation Techniques**

- **The use of distilled water is highly recommended. This will prolong the life of the pump, and greatly reduce the occurrence of mineral build-up.**
- **Maintain a water level of 1/2" from the top of the pan by periodically adding water. Do not allow the pumps to run dry.**
- **Wipe away any excess water that may accumulate on the copper surfaces. Water on the outside of the copper will accelerate the verdigris (copper turning green) process.**
- **Use Pledge Furniture Polish with wax to help maintain the original finish of the copper. Spray the Pledge on a soft cloth and wipe the copper. This should be done 3-4 times a week.**
- **To clean the clear coated components of your fountain, use mild soap and a damp rag to remove stains and dust. Then take a damp rag that has no soap on it to clean off the soap residue.**
- **Every four months, it is a good idea to clean the pump. The pump can be taken apart by sliding the plastic face off of the pump body, and the magnetic impeller can be removed and cleaned with a calcium/lime/rust remover.**
- **A product called ProTec Scale and Stain Remover can be added to the water to help prevent calcium and mineral deposits from building up on the slate. This can be purchased at your local aquarium and pet store.**

# Large Wall Wave Fountain

©Water Wonders, Inc.

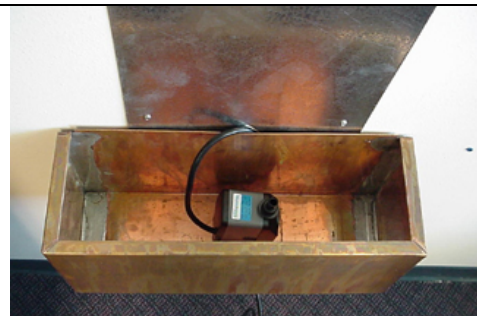
## 1 Hang the Wall Bracket

- Hold the galvanized sheet metal wall bracket up against the wall where the fountain will be hung. The height of the fountain is approximately 7" taller than the height of the wall bracket. Use a level and mark out the two top holes against the wall. Install the provided EZ-Ancors into the wall at these two top points.
- **To install E-Z Ancors, drill a 1/8" pilot hole. Press the tip of the anchor into the hole and push it in until it reaches the spiral. At this point, begin turning the anchor with a screwdriver until it is snug into the wall. Be careful not to overtighten.**
- Hang the galvanized wall bracket using two of the #8 x 1" zinc pan-head screws. The bottom of the wall bracket has the v-notch in it. With the top secured, repeat the E-Z Ancor installation with the bottom of the wall bracket.



## 2 Hang the Pan

- Place the pump inside the pan with the power cord exiting the back of the pan. On the back edge of the pan there is an open hem that slides over the lip at the bottom of the galvanized wall bracket. Center the pump cord and hang the pan on the bracket.



# Large Wall Wave Fountain

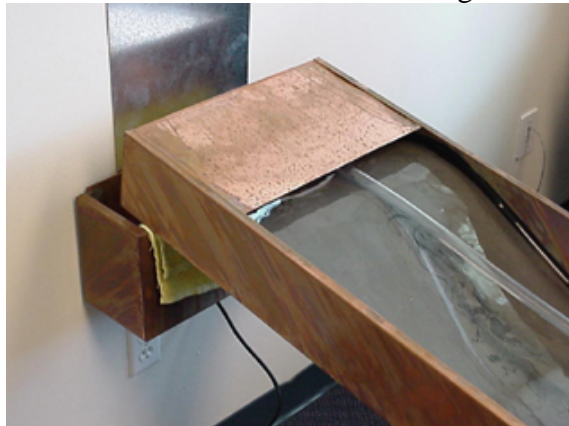
©Water Wonders, Inc.

## 3 Hang the Slate

- Place a soft towel over the edge of the pan as shown below.



- Rest the front of the bottom of the frame on the edge of the pan as shown.



- With the frame resting on the pan, connect the pump to the vinyl tubing in the bottom of the frame. Make sure the pump has been turned all the way down by turning the dial clockwise.



# Large Wall Wave Fountain

©Water Wonders, Inc.

- With the pump securely connected to the tubing, lift the frame to hang it on the bracket.



- Notice the open hem at the top of the slate frame. This is what will slide over the top of the wall bracket.



- Lift the frame and slide it down over the top of the wall bracket. Make sure it is fully seated into the frame. Look on the side of the frame as the fountain is being hung to monitor the position of the frame and the wall bracket. Make sure it has been hung level.

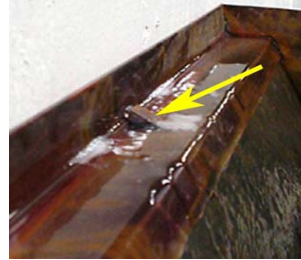


# Large Wall Wave Fountain

©Water Wonders, Inc.

## 4 Boot Up the Fountain

- Fill the pan with water up to approximately 1” from the top of the pan. The water level will determine the sound that comes from the fountain.



- Once the pan is full, plug the fountain in. To help water flow over the entire face of the slate, use a spray bottle and spray the slate.
- Position the flow tab to the desired water flow (see picture above).
- **It is very important to make sure that water is not flowing up and over the back edge of the fountain. If this is occurring, the pump needs to be turned down by adjusting the control dial on the side of the pump.**
- Wipe away any drips of water that may have accumulated on the edge of the pan during boot up.
- These steps must be taken every time the fountain is started.
- **Enjoy your fountain!**

### Trouble-shooting:

- *Pump is too noisy:* Be sure the pump's output nozzle is securely inserted into the fountain's clear intake tube as forced water escaping the connection may cause unwanted air bubble noise. Make sure the pump is completely submerged. Also, a scotchbrite pad can be placed underneath the pump to dampen any noise that may occur.
- *Uneven water flow:* The fountain must be mounted level. Spray the dry surfaces of the slate until water flows evenly. Fountain will perform best when allowed to run continuously
- *Water does not flow:* Make sure pump output nozzle is inserted into rubber intake tube, pump is completely submerged and the power receptacle is switched to an "ON" position.

**Notice:** The process that we use to build these fountains can be described simply as peeling a layer of slate from a full slab of slate. When each layer is pulled, often times there are small diameter holes that are left on the slate that has been peeled off of the original slate. This is a result of the natural undulations and character of the slate that are transferred to the new piece. If any large holes are present, then that slate is discarded. Small holes are sometimes patched with real slate, or they left untouched. The presence of some small holes does not affect the performance or life span of the fountain. When water is flowing over the slate, the holes are not noticeable and do not pose a problem. If holes exist on your particular slate that you are dissatisfied with, a patch kit can be obtained by calling customer service at Water Wonders, 1-800-549-1880.

Although Water Wonders Fountains are designed not to splash, sweating from condensation and splashing droplets can occur if set up incorrectly. As a precaution against water stains, please protect fine surfaces under and near fountain.

***If you have any questions regarding the set-up or maintenance of your fountain please call your dealer.***